

Spring Edition



Energy Explorers

Southern Rivers Energy[®]

A Touchstone Energy[®] Cooperative





Start

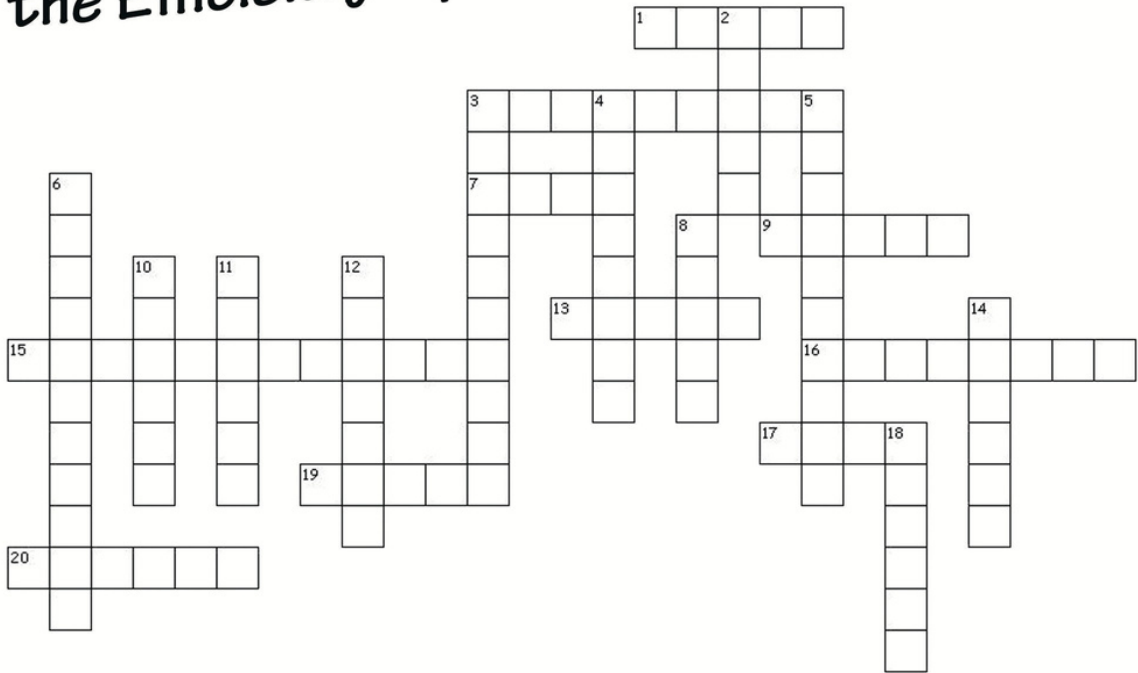


A line drawing of a doghouse. The doghouse has a triangular roof with horizontal lines. On the front wall, there is a bone-shaped sign with the word "SPARKY" written on it. The front wall also has horizontal lines. The entrance is a dark, arched opening. The side of the doghouse is also visible, showing horizontal lines.

Be Energy Wise!



Read the Efficiency Tips to Find the Missing Words



Across

1. Purchase a dishwasher that saves _____ and energy.
3. Select efficient home office _____ and electronics.
7. Install ceiling _____ to reduce air conditioning costs.
9. Purchase a clothes _____ with a moisture sensor.
13. _____ between window/door frames and walls.
15. Install a _____ thermostat.
16. Use _____ for light or heat whenever practical.
17. Launder clothes in cold or _____ water.
19. Fix _____ faucets.
20. Turn off electronics and _____ chargers when not in use.

Down

2. Plant _____ to shelter your home from the elements.
3. Upgrade to a high-_____ furnace/ air conditioner or heat pump.
4. _____ attic, exterior walls, basement, and crawl spaces.
5. Adjust your _____ when leaving home for an extended time.
6. Completely convert to compact and other _____ light bulbs.
8. _____ load dishwashers, clothes washers, and dryers.
10. Set hot water heater no _____ than 120°F.
11. Use window blinds or _____ to keep out cold or heat.
12. Purchase an insulating _____ for the hot water heater.
14. Turn off _____ when you leave a room.
18. Install _____ sensors, dimmers, and timers for indoor and outdoor lighting.

Southern Rivers Energy®
A Touchstone Energy® Cooperative

Across: 1. water 2. equipment 7. fans 9. dryer 13. caulk 15. programmable 16. sunlight 17. warm 19. leaky 20. unplugging
Down: 2. trees 3. efficiency 4. insulate 5. thermostat 6. fluorescent 8. fully 10. higher 11. shades 12. blankets 14. lights 18. motion

Safe Electricity.org

Lightning



SAFETY

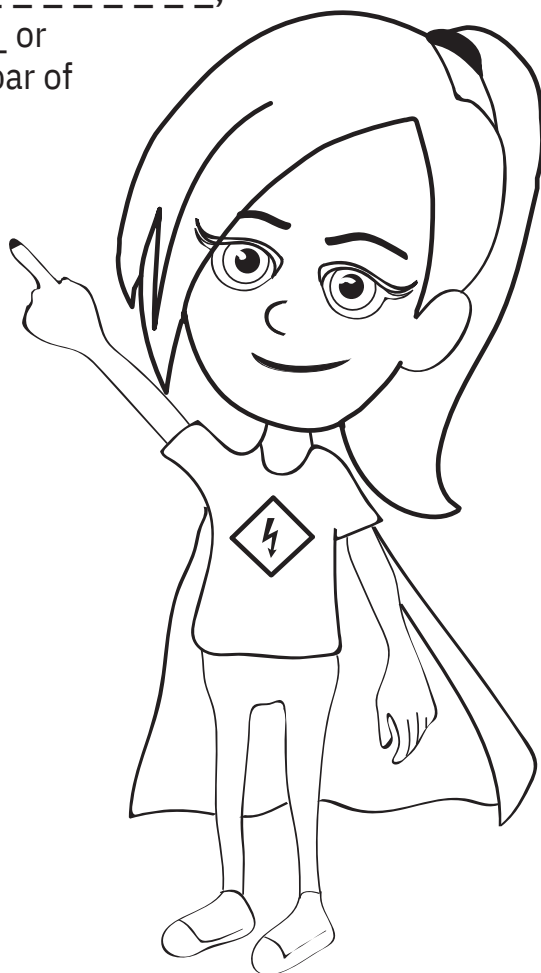
with

Safety Sadie

Did you know _____ can _____ from up to 15 miles away? It is _____ to be outside during a _____. A good rule to remember is “When _____ roars go _____.” Go inside a house or a _____, or a hard top _____. Never seek shelter under a _____ or pavilion. Wait at least 30 _____ after the last roar of thunder to head _____.

S E T U N I M T C E B X Y I I
Z K I I P M I H E A D X O N K
G I U K N A F U G D R Y D Q Z
S R L H S Q S N S Z I O S I V
C T Y Z Y R I D S N O S G K Z
S S B W E N Z E R R Q B T J O
Q Q G U T N G R S P J G U U X
T M K H I K P W L X M M P P O
L W G M Y L Z X Y H R T R E E
C I M R V E D G J O C T P J C
L Y W G P K Y I T Z W J X V O
Z D C V W P Q S N S Y G Z U P
D A N G E R O U S G Z G C V K
A D Z G N L P Z F F G I G A G
M S C W H P T I U J W Z Z P Y

BUILDING
CAR
DANGEROUS
INDOORS
LIGHTNING
MINUTES
OUTSIDE
STORM
STRIKE
THUNDER
TREE



For more information, visit:

Safe
Electricity.org

Southern Rivers Energy
A Touchstone Energy® Cooperative

***When it comes to severe weather...
hope for the best, **but prepare for the worst.*****

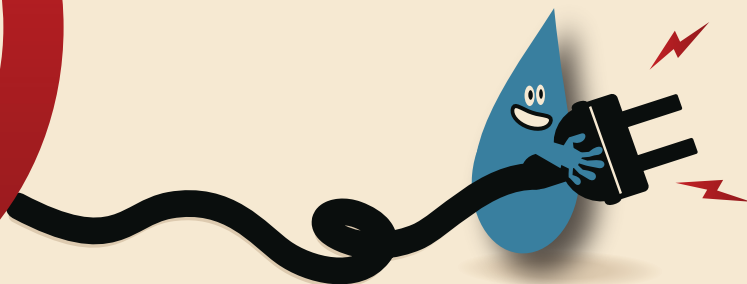


You can begin your preparation by assembling an emergency preparedness kit, which includes items to help keep your family safe and comfortable during a power outage. Your kit should include items such as water, non-perishable food, flashlight, batteries, blankets, and a first aid kit.

- _____ Drinking water & food
- _____ Blankets, pillows, & clothing
- _____ Basic first-aid supplies
- _____ Medications
- _____ Basic toiletries
- _____ Flashlights
- _____ Battery-operated radio
- _____ Extra supply of batteries
- _____ Cell phone with chargers
- _____ Cash and credit cards
- _____ Basic tools (duct tape, wrench, etc.)
- _____ Important documents & numbers
- _____ Toys, books, & games
- _____ Baby supplies
- _____ Pet supplies



SAFETY AGENT



Safe Electricity is looking for good recruits like you to become Junior Safety Agents!

Here is the problem: electricity and water make a dangerous combination. Safe Electricity wants you to learn how to stay safe from electrical dangers and help keep others safe as well.

Complete the sentences below. Then, put the underlined letters in the decoder. When you have finished all the sentences, the clues will come together to form a secret message!

1. This is the place to go if you need to get clean. However, electronics should never be near or in the .
2. Water and never mix.
3. Never play outside in thunder .
4. Never use an electronic or appliance in a or wet area.
5. Never splash, spray, or squirt onto an electronic.
6. When you get out of the pool or tub, before handling electronics.
7. "When roars, go indoors."
8. Only electric go in outlets. Not water, toys, or other knick knacks.
9. Do not let sniff, lick, or play with electronics and their cords.
10. The kitchen is full of treats but also has electrical dangers. Ask an for help with kitchen activities.
11. Stay far from electronics if you are wet.
12. Wash your hands in the , but keep electronics far away.
13. safety tips with friends to help keep everyone safe.
14. Never play in waters.
15. After a storm, stay far away from damaged poles.

DECODER: _ _ _ _ _ / _ _ _ _ _

Congratulations! You are a Junior Safety Agent! Share what you know about electrical safety to keep your friends and family safe. Learn more at:



ANSWER KEY:
1. BATHTUB, 2. ELECTRICITY, 3. STORMS, 4. DAMP, 5. WATER, 6. DRY OFF, 7. THUNDER, 8. PLUGS, 9. PETS,
10. ADULT, 11. AWAY, 12. SINK, 13. SHARE, 14. FLOOD, 15. POWER, DECODER: BE SMART, STAY SAFE

SAFETY Sudoku



Place the word **SAFETY** in the grid so each column, row, and block only contain unique letters!

Answers:

E	S	F	T	Y	A
T	Y	A	F	S	E
F	E	Y	S	A	T
S	A	T	Y	E	F
Y	A	E	F	S	T
A	S	T	E	F	Y

Y		E		T	A
	T		E	F	
F	E		T		S
T		S		E	F
	S	F		Y	
A	Y		F		E



AMERICA'S ELECTRIC
COOPERATIVES

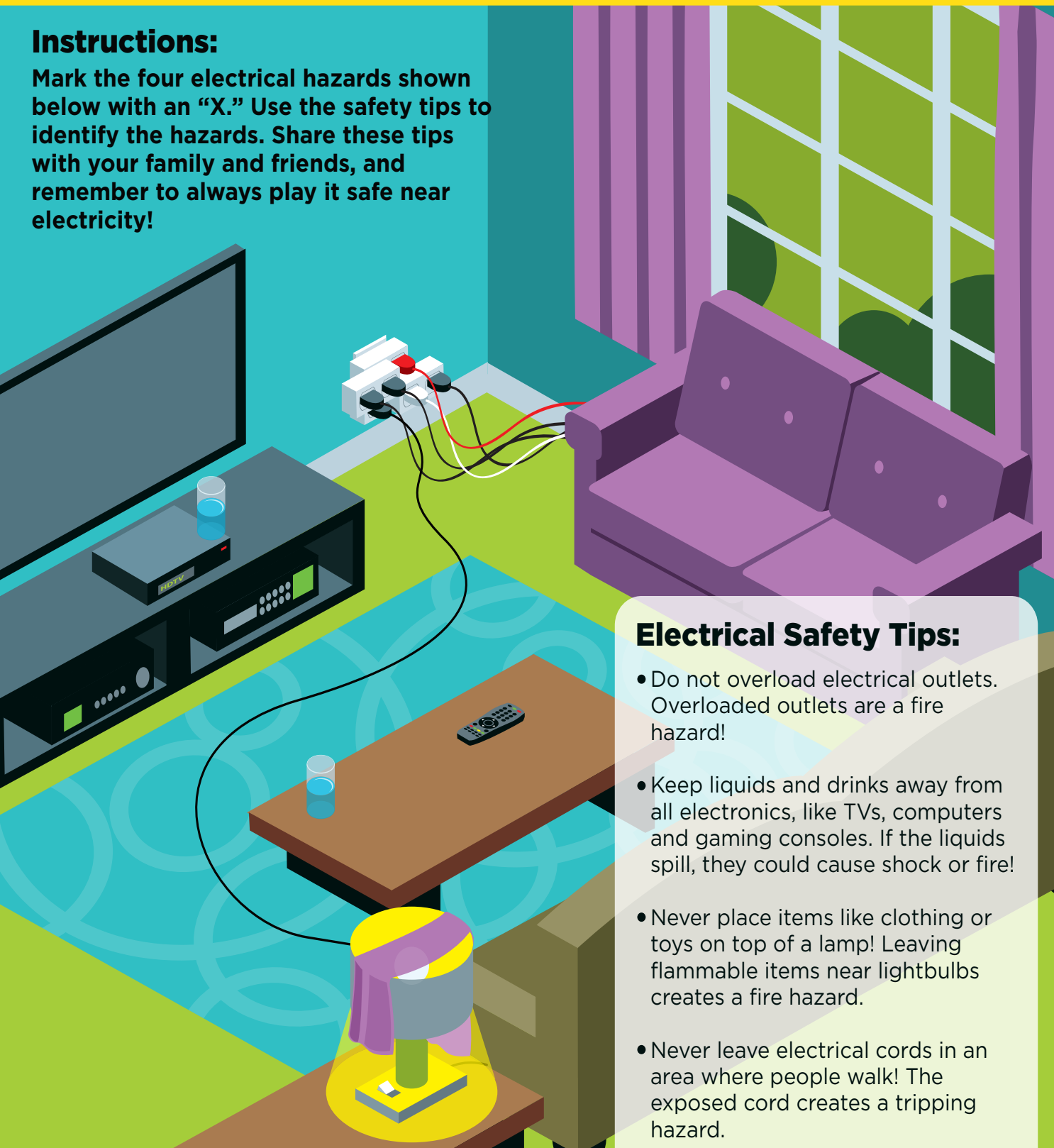
Electrical Safety Activity



**Energy
Explorers**

Instructions:

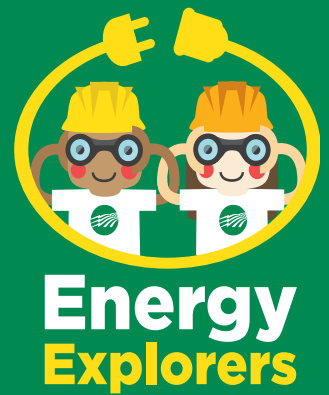
Mark the four electrical hazards shown below with an "X." Use the safety tips to identify the hazards. Share these tips with your family and friends, and remember to always play it safe near electricity!



Electrical Safety Tips:

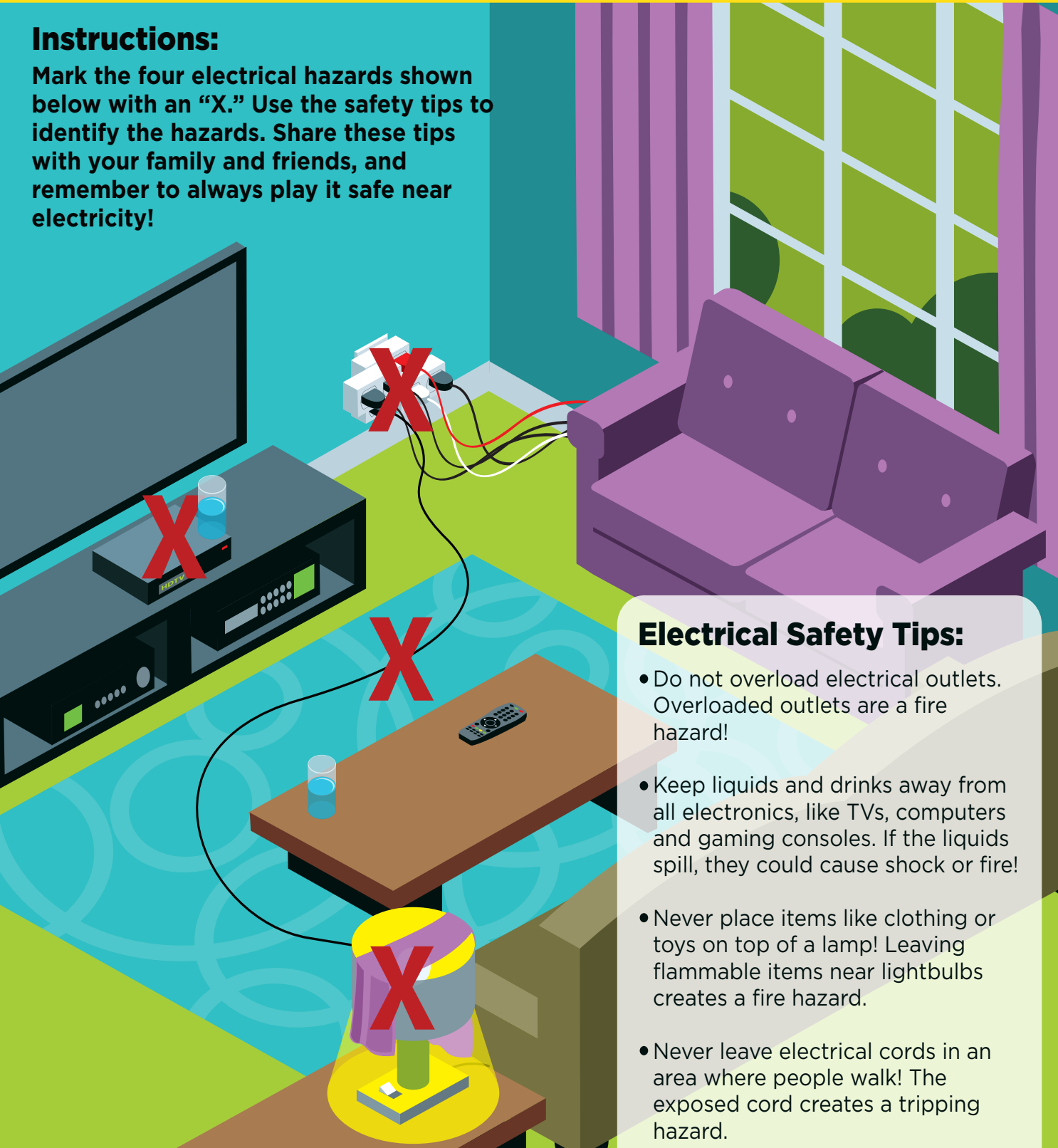
- Do not overload electrical outlets. Overloaded outlets are a fire hazard!
- Keep liquids and drinks away from all electronics, like TVs, computers and gaming consoles. If the liquids spill, they could cause shock or fire!
- Never place items like clothing or toys on top of a lamp! Leaving flammable items near lightbulbs creates a fire hazard.
- Never leave electrical cords in an area where people walk! The exposed cord creates a tripping hazard.

Electrical Safety Activity Answers



Instructions:

Mark the four electrical hazards shown below with an “X.” Use the safety tips to identify the hazards. Share these tips with your family and friends, and remember to always play it safe near electricity!



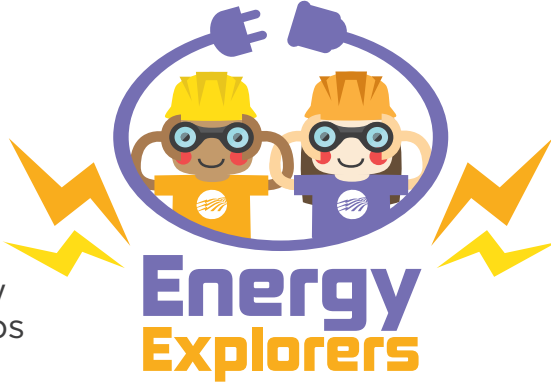
Electrical Safety Tips:

- Do not overload electrical outlets. Overloaded outlets are a fire hazard!
- Keep liquids and drinks away from all electronics, like TVs, computers and gaming consoles. If the liquids spill, they could cause shock or fire!
- Never place items like clothing or toys on top of a lamp! Leaving flammable items near lightbulbs creates a fire hazard.
- Never leave electrical cords in an area where people walk! The exposed cord creates a tripping hazard.

THE STEPS TO RESTORING POWER

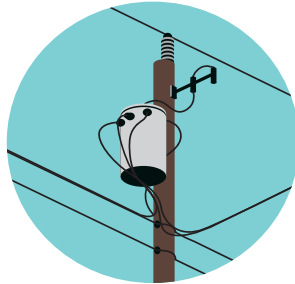
When the power goes out, line crews work hard to restore electricity as quickly and safely as possible. To ensure the process is done efficiently, line crews follow specific steps to restore power. Can you order the steps below to match how power is restored?

Hint: Check your work in the answer key.



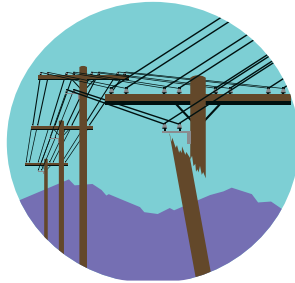
STEP #

Tap lines are inspected. These lines deliver power to transformers that are either mounted on utility poles or placed on pads for underground electric service.



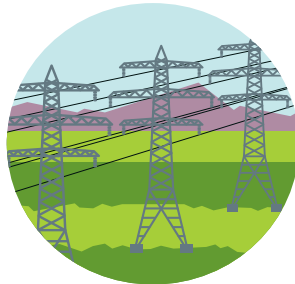
STEP #

Distribution power lines are inspected. These are the lines you typically see on the side of the road that deliver power to communities.



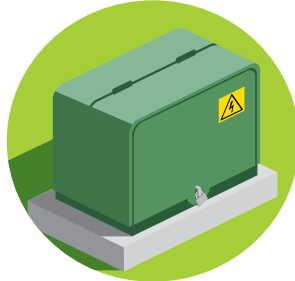
STEP #

Large, high-voltage transmission lines are inspected for damage. These power lines deliver large amounts of electricity over great distances.



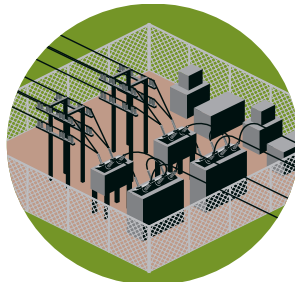
STEP #

Service lines are inspected. These are the power lines that run **between the transformer and your home**.



STEP #

Distribution substations are inspected. These facilities lower the voltage of power, then send power to distribution lines.

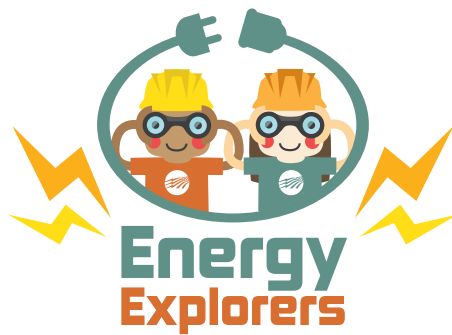




THANK YOU

FOR KEEPING THE POWER ON

Safety Ambassador Checklist



Practicing safety near electricity can save lives, and we want you to spread the important message of safety.

With the help of an adult, complete the checklist below then cut out the badge to show you care about electrical safety.

TASK

COMPLETED

Electrical outlets are not overloaded with multiple power strips and devices.

☐

Electrical cords are not causing a trip hazard or placed under rugs or carpet.

☐

Smoke alarms are working.

☐

Smoke alarms are installed in every bedroom, outside each sleeping area and on every level of the house.

☐

All light switches are working properly.

☐

SIGNATURE _____

