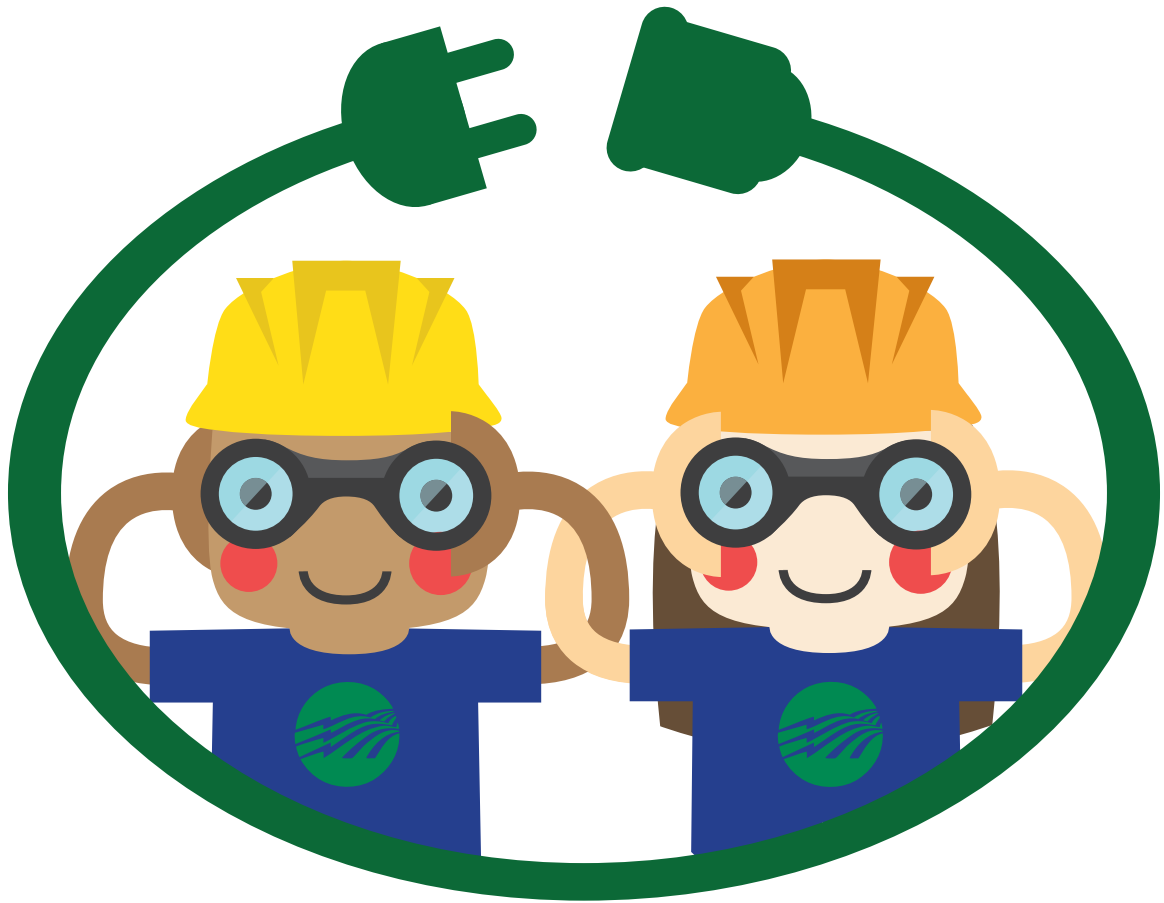


Winter Edition



Energy Explorers

Southern Rivers Energy[®]

A Touchstone Energy[®] Cooperative



HOLIDAY EFFICIENCY WORD SEARCH

The holidays are a fun, festive time of year! We typically use more electricity during the holiday season.

Read the holiday efficiency tips below, then find and circle the **bolded** words in the puzzle.



W G W P D K S S J J W S U M M
V Y F K F N E Z Z H T T F C B
T J L P C W V E B H V P V W J
P I G I L Z V L G W K K Z G R
I U M D M W W I H C N J N K O
G F X E R A L S D N E I R F G
J K H W R D F P X G V L F B O
C A T H E R M O S T A T I D E
F E V L Y C H U O Y O T R T O
U I O K C S N X G Q V J E C T
J C A J G L X M Y A W A P Q V
N O D R I A S U E D K S L B D
P C H G S Q X P X H C U A V A
Q V H E A L X O S D U E C V G
O T R N F Z H Q G V V S E H V

- Decorate your tree with energy-saving **LED lights**.
- Control home heating costs with a smart or programmable **thermostat**.
- Save energy by using a **timer** to turn off holiday lights when you're sleeping.
- If you have a **fireplace**, ask an adult to close the damper when a fire is not burning.
- Open blinds and curtains during the day to let **sunlight** in to warm your home.
- Lower the thermostat when you invite **friends** and **family** over.
(The extra people in your home creates additional warmth.)

Electrical Safety Checklist

Nearly half of all home fires occur during winter months. Take a few minutes to identify and correct any potential electrical hazards to ensure the safety of your home.

SWITCHES AND OUTLETS

- **Are any switches or outlets warm to the touch?** YES NO
Warm switches or outlets indicate an unsafe wiring condition.
- **Are any outlets or switches discolored?** YES NO
Discoloration indicates dangerous heat buildup at these connections.
- **Do plugs fit snugly into outlets?** YES NO
Loose-fitting plugs can cause overheating and fires.

CORDS

- **Are any cords cracked, frayed or damaged?** YES NO
Damaged cords can expose wires, causing shock or fire hazard.
- **Are any cords pinched by furniture or windows, or attached to anything with staples or nails?** YES NO
Pinching and/or stapling cords can damage the insulation, causing shock or fire hazard.
- **Do you use extension cords on a permanent basis?** YES NO
Extension cords should only be used temporarily.

ELECTRIC PANEL

- **Do you have recurring tripped circuit breakers or blown fuses?** YES NO
If yes, this could indicate you're exceeding a safe level of electrical current.
- **Do you have arc fault circuit interrupters (AFCIs)?** YES NO
AFCIs provide greater fire protection.
Check your circuit breakers for the AFCI label.



AMERICA'S ELECTRIC
COOPERATIVES

*Please note this is not a comprehensive safety checklist.
Visit [ESFI.org](https://www.esfi.org) for more information.
Source: ESFI*



Electrical Safety Activity



**Energy
Explorers**

The holiday season is a festive time of year! Remember to keep electrical and fire safety in mind as you decorate your home.

*Can you find the four hazards in the home below?
Use the safety tips for clues.*

Electrical Safety Tips:

- Do not overload electrical outlets with too many decorations or appliances.
- Never leave a candle burning if you're not in the room.
- Make sure your tree is watered daily.
- Extension cords used for holiday decorations should be checked for fraying/damaged or exposed wires.



AMERICA'S ELECTRIC
COOPERATIVES



AMERICA'S ELECTRIC
COOPERATIVES



**Energy
Explorers**

Energy Sources Activity

Did you know Americans use electricity that is generated from different fuel sources? Some fuel sources are renewable, meaning they harness natural energy from the Earth's resources, and some are non-renewable, meaning they use fossil fuels.

Do you know which energy sources are renewable and non-renewable? Use safety scissors to cut out the images below and place them in the correct row. Use the answer key to check your work.

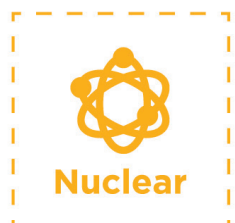
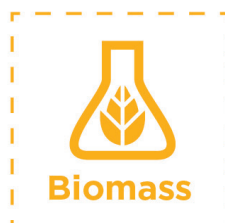
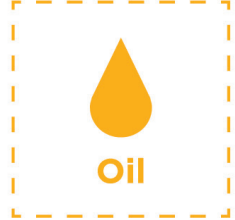
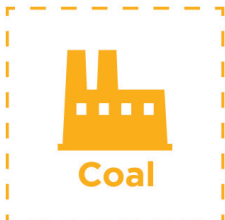
Renewable Sources



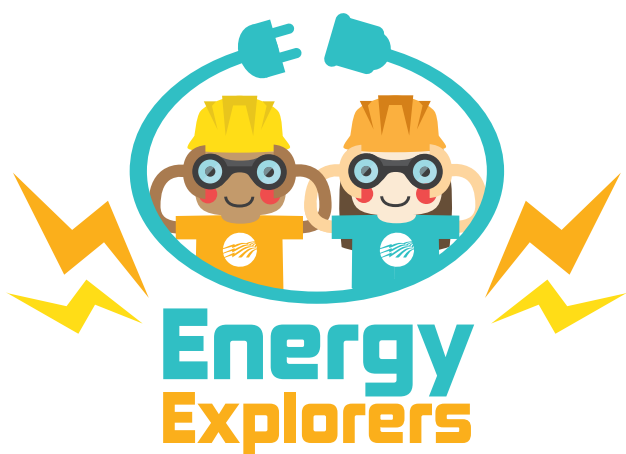
Non-Renewable Sources



Answers: Renewable Sources: Hydro, Wind, Biomass, Solar Non-renewable Sources: Natural Gas, Nuclear, Coal, Oil



WINTER ENERGY EFFICIENCY CROSSWORD



Did you know there are several ways you can fight the winter chill *and* save energy at home? Complete the crossword puzzle below to learn how to save energy during winter months.

1 Orange: Open curtains and blinds during the day to allow _____ in to warm your home.

2 Across: If you have a _____ at home, ask an adult to close the flue when a fire is not burning.

3 Down: Unplug phone and tablet _____ when they're not in use.

4 Across: Instead of turning up the thermostat, wear additional layers of _____ to stay warm.

5 Down: Always turn off _____ when you leave a room.

6 Across: Ask an adult to check the _____ for your home's heating system. This should be replaced regularly.

1.

2.

3.

4.

5.

6.

4 Across: Instead of turning up the thermostat, wear additional layers of _____ to stay warm.

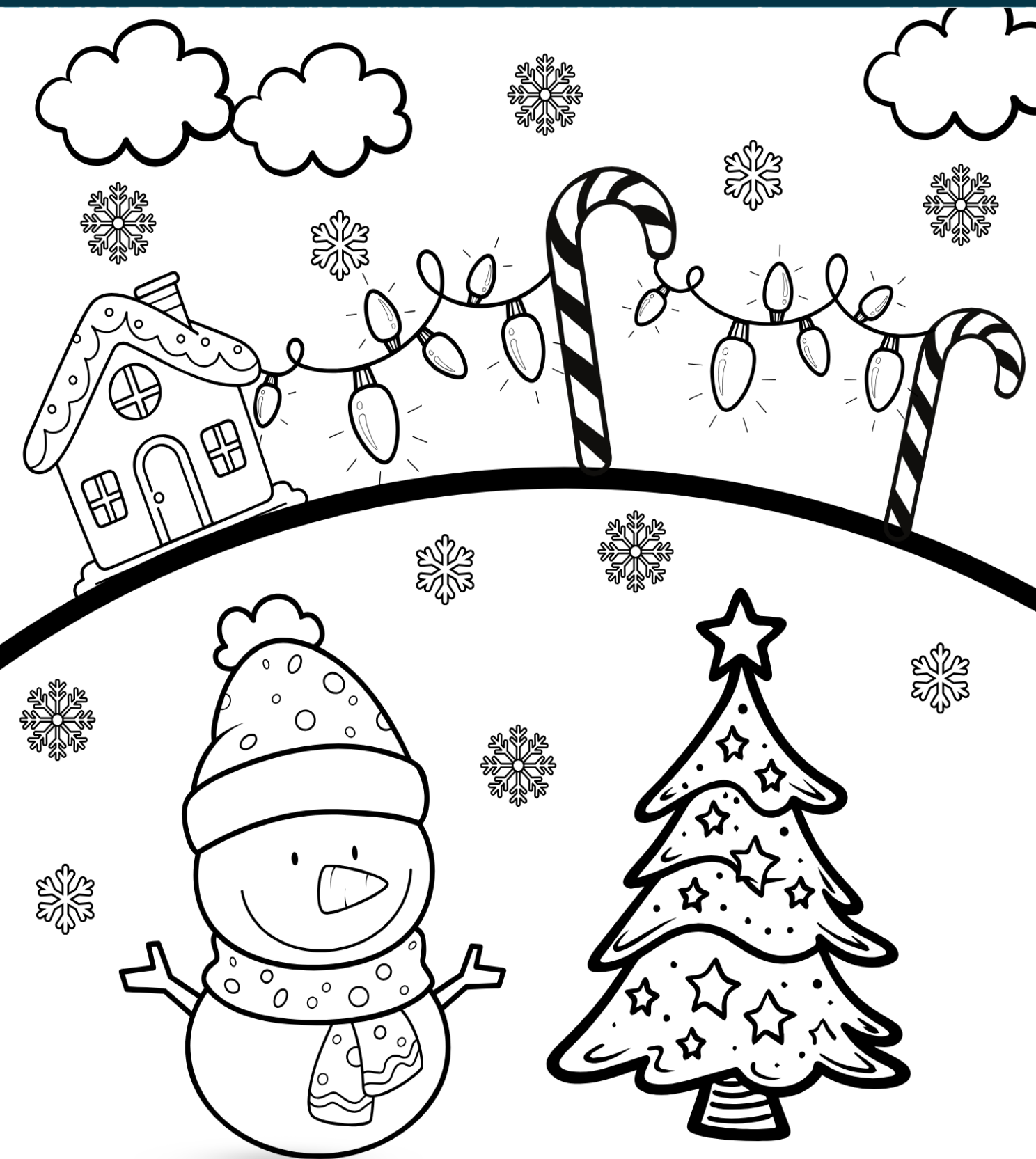
5 Down: Always turn off _____ when you leave a room.

6 Across: Ask an adult to check the _____ for your home's heating system. This should be replaced regularly.

Answer Key: 1 Down) sunlight 2 Across) fireplace 3 Down) chargers 4 Across) clothing 5 Down) lights 6 Across) air filter

WINTER COLORING SHEET

Extension cords can overheat and cause fires when used improperly. Ensure to follow these essential tips to safeguard your home during this holiday season.



WINTER COLORING SHEET

Extension cords can overheat and cause fires when used improperly. Ensure to follow these essential tips to safeguard your home during the holiday season.



Do not overload extension cords.

Inspect cords for any damage before use.

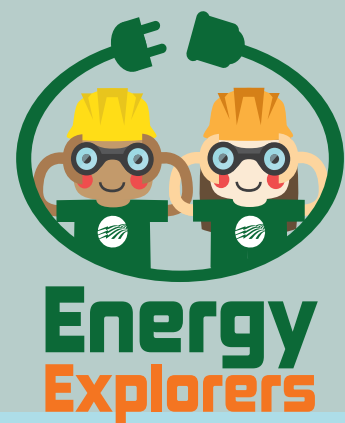
Cords with frayed or cracked sockets, loose or bare wires, and loose connections **should not be used**.

Avoid substituting extension cords for permanent wiring.

Refrain from nailing or stapling electrical cords to walls or baseboards.

Keep all outdoor extension cords **clear of snow and standing water**.

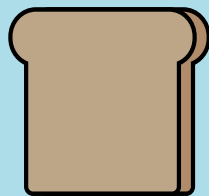
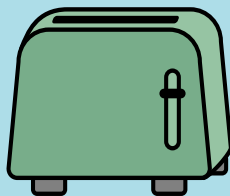
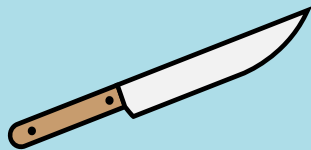
ELECTRICAL HAZARD ACTIVITY



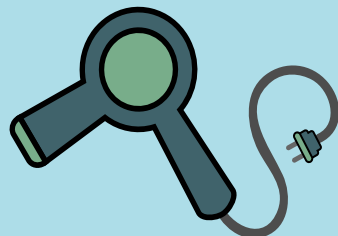
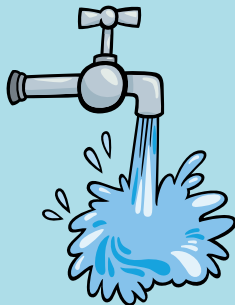
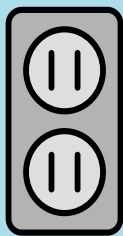
The Energy Explorers want to remind you to always practice electrical safety! Remember, electricity can be dangerous, so make sure to avoid electrical hazards.

DIRECTIONS: Circle the item that doesn't belong. **HINT:** If all three items in the row were combined, which would make the situation an electrical hazard?

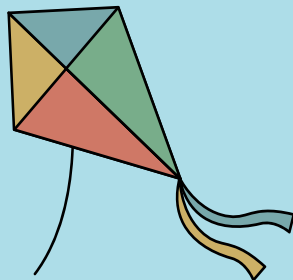
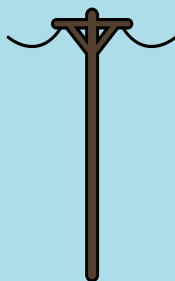
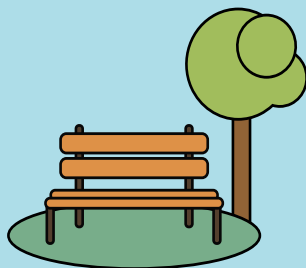
1



2



3



Answer Key
1. KNIFE
2. SINK
3. POWER LINES

ENERGY EXPLORERS BINGO

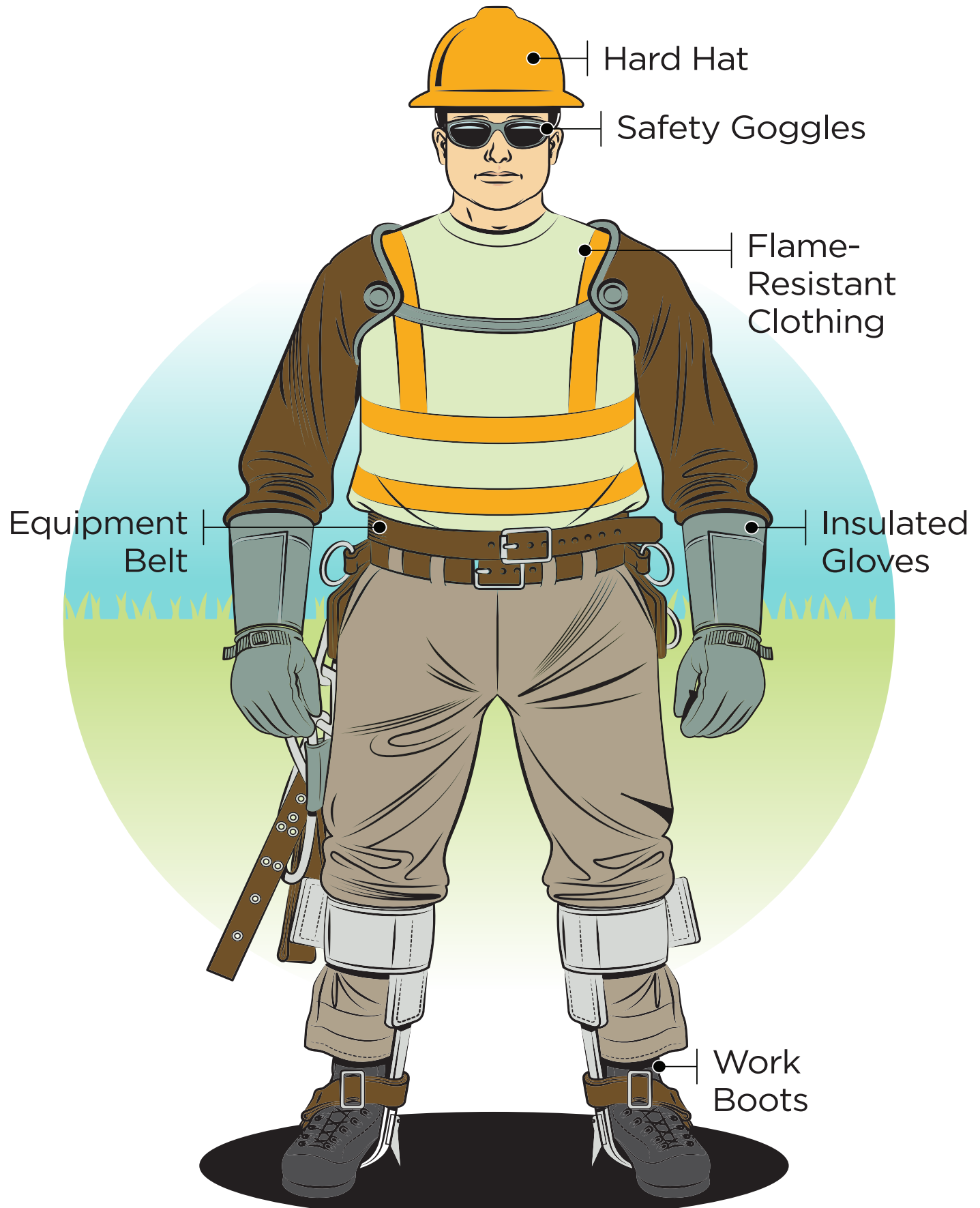
Be an **Energy Explorer**! Cross out each task you finish.
Ask an adult for help where needed. Complete any **three** rows, columns, or main diagonals. To earn a prize, turn this card in by:



B	I	N	G	O
Share an energy saving tip with a loved one.	Check to ensure an electrical outlet is not overloaded. (But don't touch)	Unplug a device that is not in use.	Check for a fire extinguisher.	Take a shorter shower/bath to use less water.
Check if there are trees near the house that interfere with power lines.	Unplug a charger that's not in use.	Tell one friend why electrical safety is important to you.	Check if electrical cords are worn or frayed, but don't touch them.	Turn out a light when leaving the house.
Turn off a ceiling fan in an empty room.	Check to see if you have a programable thermostat.		Recycle a can, bottle or paper.	Make sure doors/windows are closed when AC/heat is on.
Put a computer to sleep.	If any electrical cords are under a rug or carpet, tell an adult.	Ask an adult the last time the HVAC filter was cleaned. (It should be every 60-90 days)	Ask if you have an Energy Star appliance.	Locate a flashlight in case of emergency.
Turn off the water while brushing your teeth.	Check to make sure liquids are away from electronics.	Ask if smoke detectors are working.	Tell an adult family member about a leaky faucet.	Check if any incandescent or CFL bulbs can be replaced with an LED bulb.

NAME _____

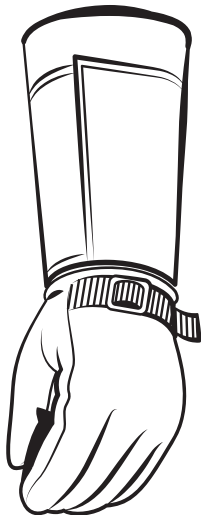
PIN THE SAFETY GLOVE ON THE LINEWORKER!



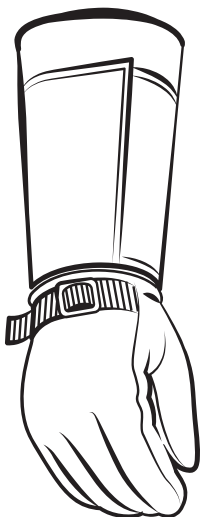
NAME: _____



NAME: _____



NAME: _____



NAME: _____

